



COMMONWEALTH OF KENTUCKY  
TRANSPORTATION CABINET

[www.transportation.ky.gov/](http://www.transportation.ky.gov/)

Andy Beshear  
GOVERNOR

Jim Gray  
SECRETARY

April 15, 2021

CALL NO. 202  
CONTRACT ID NO. 211016  
ADDENDUM # 1

Subject: Fleming-Carter Counties, 121GR21D016-STP BRO  
Letting April 23, 2021

- (1) Revised - Special Note for Construction Phasing - Page 21 of 254
- (2) Revised - Utilities and Rail Certification Note - Pages 72-75 of 254
- (3) Revised - Plan Sheets - R3, R6, R8, and S2

Proposal revisions are available at <http://transportation.ky.gov/Construction-Procurement/>.

If you have any questions, please contact us at 502-564-3500.

Sincerely,

Rachel Mills,

A handwritten signature in black ink that reads "Rachel Mills".

Rachel Mills, P.E.  
Director  
Division of Construction Procurement

RM:mr  
Enclosures

## Special Note for Construction Phasing

09-10002 - CARTER COUNTY - 022B00006N

### Phase I

- Construct all temporary traffic control devices in accordance with the current edition of the KYTC spec book, standard drawings and MUTCD.
- Maintain two lanes of traffic on existing KY 1 and KY 773.
- Construct the double 60" pipes for the temporary diversion.
- Construct Phase I of the proposed 9'x5' RCBC.
- Maintain all existing drainage patterns.
- Construct the Phase II temporary diversion up to the limits of existing roadways (KY 1 and KY 773).
- Provide at least 2 weeks notification via variable message signs as directed by engineer prior to implementation of four way stop of Phase II traffic pattern.

### Phase II

- Shift traffic to the temporary diversion.
- Provide two-weeks' notice to KY DEP/ERT (Rodney Maze – [rodney.maze@ky.gov](mailto:rodney.maze@ky.gov) – 606-782-0246) and the KYTC Project Engineer prior to shifting traffic to the temporary diversion.
- Traffic will use temporary diversion while contaminated soil is excavated by others (under the direction of KY DEP/ERT) in the Phase III construction area.
- Contractor will not perform construction activities in the Phase III construction area until the KYTC Project Engineer and Rodney Maze, KY DEP/ERT confirm that contaminated soil removal work has been completed by others.
- If the contaminated soil excavation by others is not complete within 30 calendar days from the shifting of traffic to the temporary diversion, then a time extension by change order will be negotiated between the contractor and KYTC.

### Phase III

- Install temporary barrier with crash cushions between culvert and Parcel 3.
- Once given clearance by KYTC that contaminated soil excavation work has been completed, construction of the remainder of the proposed 9'x5' RCBC should commence.
- The Contractor shall notify KY DEP/ERT (Rodney Maze) a minimum of 3 business days before removing the bottom slab or foundation of the existing culvert. The ERT will then assess the soil for any gross contamination. If gross contamination is found, then the Contractor will cease construction until the ERT removes the identified gross contamination. Should this occur, a time extension by change order will be negotiated between the Contractor and KYTC.

### Phase IV

- Remove the temporary diversion, temporary pipes, barriers and traffic control devices.
- Complete final surfacing and permanent signing and striping operations.
- Milestone project completion date November 15, 2021.

## UTILITIES AND RAIL CERTIFICATION NOTE

**Carter County**  
**ADDRESS DEFICIENCIES OF KY-1 BRIDGE OVER POWELL BRANCH. (022B00006N)**  
**ITEM NUMBER: 09-10002.00**

### PROJECT NOTES ON UTILITIES

Please Note: The information presented in this Utility Note is informational in nature and the information contained herein is not guaranteed.

The contractor will be responsible for contacting all utility facility owners on the subject project to coordinate his activities. The contractor will coordinate his activities to minimize and, where possible, avoid conflicts with utility facilities. Due to the nature of the work proposed, it is unlikely to conflict with the existing utilities beyond minor facility adjustments. Where conflicts with utility facilities are unavoidable, the contractor will coordinate any necessary relocation work with the facility owner and Resident Engineer. The Kentucky Transportation Cabinet maintains the right to remove or alter portions of this contract if a utility conflict occurs. The utility facilities as noted in the previous section(s) have been determined using data garnered by varied means and with varying degrees of accuracy: from the facility owners, a result of S.U.E., field inspections, and/or reviews of record drawings. The facilities defined may not be inclusive of all utilities in the project scope and are not Level A quality, unless specified as such. It is the contractor's responsibility to verify all utilities and their respective locations before excavating.

The contractor shall make every effort to protect underground facilities from damage as prescribed in the Underground Facility Damage Protection Act of 1994, Kentucky Revised Statute KRS 367.4901 to 367.4917. It is the contractor's responsibility to determine and take steps necessary to be in compliance with federal and state damage prevention directives. The contractor is instructed to contact KY 811 for the location of existing underground utilities. Contact shall be made a minimum of two (2) and no more than ten (10) business days prior to excavation. The contractor shall submit Excavation Locate Requests to the Kentucky Contact Center (KY 811) via web ticket entry. The submission of this request does not relieve the contractor from the responsibility of contacting non-member facility owners, whom are to be contacted through their individual Protection Notification Center. It may be necessary for the contractor to contact the County Court Clerk to determine what utility companies have facilities in the area. Non-compliance with these directives can result in the enforcement of penalties.

## UTILITIES AND RAIL CERTIFICATION NOTE

**Carter County**  
**ADDRESS DEFICIENCIES OF KY-1 BRIDGE OVER POWELL BRANCH. (022B00006N)**  
**ITEM NUMBER: 09-10002.00**

**NOTE: DO NOT DISTURB THE FOLLOWING FACILITIES LOCATED WITHIN THE PROJECT DISTURB LIMITS**

Grayson Utilities Commission - Water  
Grayson Utilities Commission - Natural Gas  
Kentucky Power Company - Electric  
Windstream Kentucky East, Inc. - Telephone  
Suddenlink - CATV

**\*The Contractor is fully responsible for protection of all utilities listed above\***

**THE FOLLOWING FACILITY OWNERS ARE RELOCATING/ADJUSTING THEIR FACILITIES WITHIN THE PROJECT LIMITS AND WILL BE COMPLETE PRIOR TO CONSTRUCTION**

Grayson Utilities Commission- Water & Natural Gas will be relocating their facilities and will be complete with the relocations on or before July 31, 2021.

Kentucky Power Company (AEP)- Electric will be relocating their facilities and will be complete with the relocations on or before May 15, 2021.

Windstream Kentucky East, Inc. – Telephone will be relocating their facilities and will be complete with the relocations on or before May 15, 2021.

Suddenlink – CATV will be relocating their facilities and will be complete with the relocations on or before May 15, 2021.

## UTILITIES AND RAIL CERTIFICATION NOTE

**Carter County**  
**ADDRESS DEFICIENCIES OF KY-1 BRIDGE OVER POWELL BRANCH. (022B00006N)**  
**ITEM NUMBER: 09-10002.00**

**THE FOLLOWING FACILITY OWNERS HAVE FACILITIES TO BE RELOCATED/ADJUSTED BY THE OWNER OR THEIR SUBCONTRACTOR AND IS TO BE COORDINATED WITH THE ROAD CONTRACT**

Not Applicable

**THE FOLLOWING FACILITY OWNERS HAVE FACILITIES TO BE RELOCATED/ADJUSTED BY THE ROAD CONTRACTOR AS INCLUDED IN THIS CONTRACT**

Not Applicable

**RAIL COMPANIES HAVE FACILITIES IN CONJUNCTION WITH THIS PROJECT AS NOTED**

**No Rail Involvement**    **Rail Involved**    **Rail Adjacent**

## UTILITIES AND RAIL CERTIFICATION NOTE

**Carter County**  
**ADDRESS DEFICIENCIES OF KY-1 BRIDGE OVER POWELL BRANCH. (022B00006N)**  
**ITEM NUMBER: 09-10002.00**

### AREA FACILITY OWNER CONTACT LIST

Facility Owner	Address	Contact Name	Phone	Email
Grayson Utilities Commission - Natural Gas	671 South State Hwy. 7 Grayson KY 41143	Gerald Haney	6064747569	utilitysupt@graysonutilities.com
Grayson Utilities Commission - Water	671 South State Hwy. 7 Grayson KY 41143	Gerald Haney	6064747569	utilitysupt@graysonutilities.com
Kentucky Power Company - Electric	12333 Kevin Avenue Ashland KY 41102	John Sode	6069291462	jpsode@aep.com
SuddenLink - CATV	PO BOX 1220 Scott Depot, WV 25560	Rusty Pauley	3046541137	Rusty.pauley@alticetechservicesusa.com
Windstream Kentucky East, Inc. - Telephone	Morehead, KY 619 15 <sup>th</sup> St. Ashland, KY	Chris Barker & Mark Ware(KDL)	606-356-7588 606-369-3677	<a href="mailto:Chris.Barker@windstream.com">Chris.Barker@windstream.com</a> <a href="mailto:mark.ware@windstream.com">mark.ware@windstream.com</a>

### COORDINATE CONTROL POINTS

POINT	DESCRIPTION	State Plane Coordinates			STATION	OFFSET
		NORTH (Y)	EAST (X)	ELEV. (Z)		
CP 101	5/8" REBAR & CAP	4002315.98	5733229.84	604.38	6+86.91	169.71' LT
CP 102	5/8" REBAR & CAP	4002120.34	5733557.28	607.73	5+93.50	208.56' RT
CP 103	5/8" REBAR & CAP	4002081.66	5733373.07	604.35	5+25.28	22.20' RT

**PROJECT COORDINATES**  
Coordinates for horizontal control were obtained by GPS observations using Spectra SP80 GNSS receivers on the NAD83 Kentucky State Plane Coordinate System, KY Single Zone, US Survey Feet utilizing NGS OPUS solutions dated December 13, 2018. Coordinates shown are State Plane Coordinates, US Survey Feet. No project datum factor was calculated or used for this project.

**BASIS OF ELEVATIONS**  
Elevations were established by redundant GPS observations using Spectra SP80 GNSS receivers on the NAD83 vertical datum, GEOD12B utilizing NGS OPUS solutions dated December 13, 2018 and were adjusted by closed differential level loop based on the elevation of CP 101 = 604.38'.

**CONSTRUCT PROPOSED**  
9'X5' RCBC @ 42' SKEW LT  
LT STA. 7+70 TO 7+49 (KY 1) (58 LF)

**REMOVE EXISTING** 9'X5' RCBC  
LT STA. 7+07 TO 7+49 (KY 1) (58 LF)

**REMOVE EXISTING** 72" RCP  
LT STA. 7+46 TO RT STA. 8+00 (KY 1) (80 LF)  
LT STA. 7+55 TO RT STA. 8+12 (KY 1) (80 LF)

**CONSTRUCT EDGE KEY** 11' (25 LF)  
LT/RT STA. 4+09 (KY 1) (25 LF)  
LT/RT STA. 10+12 (KY 1) (28 LF)  
LT/RT STA. 17+49 (KY 773) (22 LF)  
LT/RT STA. 33+41 (KY 773) (22 LF)

**CONSTRUCT ENTRANCE** (USE MAINLINE PAVEMENT DESIGN)  
RT STA. 19+50 (KY 773) (47 SOYD ASPH)  
LT STA. 31+80 (KY 773) (109 SOYD ASPH)

**RT STA. 17+49 TO STA. 19+46** CONSTRUCT I-GUARDRAIL END TREATMENT TYPE 7  
162.5 LF GUARDRAIL-STEEL W BEAM-S FACE  
I-TERMINAL SECTION NO. 1

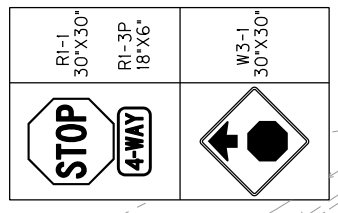
**CHANNEL LINING** CLASS II  
RT STA. 18+76 TO STA. 19+31 (KY 773) (60 TONS)  
RT STA. 8+38 TO STA. 8+66 (KY 1) (39 TONS)

**PAVE MARKING-THERMO STOP BAR-24 IN**  
RT STA. 6+84 (KY 1) (20 LF)  
LT STA. 7+54 (KY 1) (36 LF)  
RT STA. 19+70 (KY 773) (18 LF)  
LT STA. 30+24 (KY 773) (16 LF)

**REMOVE POLE** (INCLUDING CAUTION LIGHT, POLE AND BASE)  
RT STA. 19+42 (1 EA)  
LT STA. 30+17 (1 EA)

**BEGIN KY 1 CONSTRUCTION**  
STA. 4+09.01  
N 4001970.58  
E 5733392.51

ALL MATERIAL THAT WAS PLACED OR THAT HAD FALLEN INTO THE STREAM SHALL BE REMOVED BY THE CONTRACTOR AT THE END OF THE PROJECT AND THE STREAM SHALL BE RESTORED TO ITS PRECONSTRUCTION CONDITION.  
REASONABLE MEANS OF INGRESS AND EGRESS SHALL BE MAINTAINED TO ALL PROPERTIES WITHIN THE PROJECT LIMITS. ACCESS TO FIRE HYDRANTS MUST ALSO BE MAINTAINED AT ALL TIMES.  
EXISTING RIGHT OF WAY LINES AND PROPERTY CORNERS ARE BASED ON ASSUMPTIONS FROM AVAILABLE DEEDS, PVA AND KRS STATUTE 178.025 AND SHOULD BE FIELD VERIFIED.



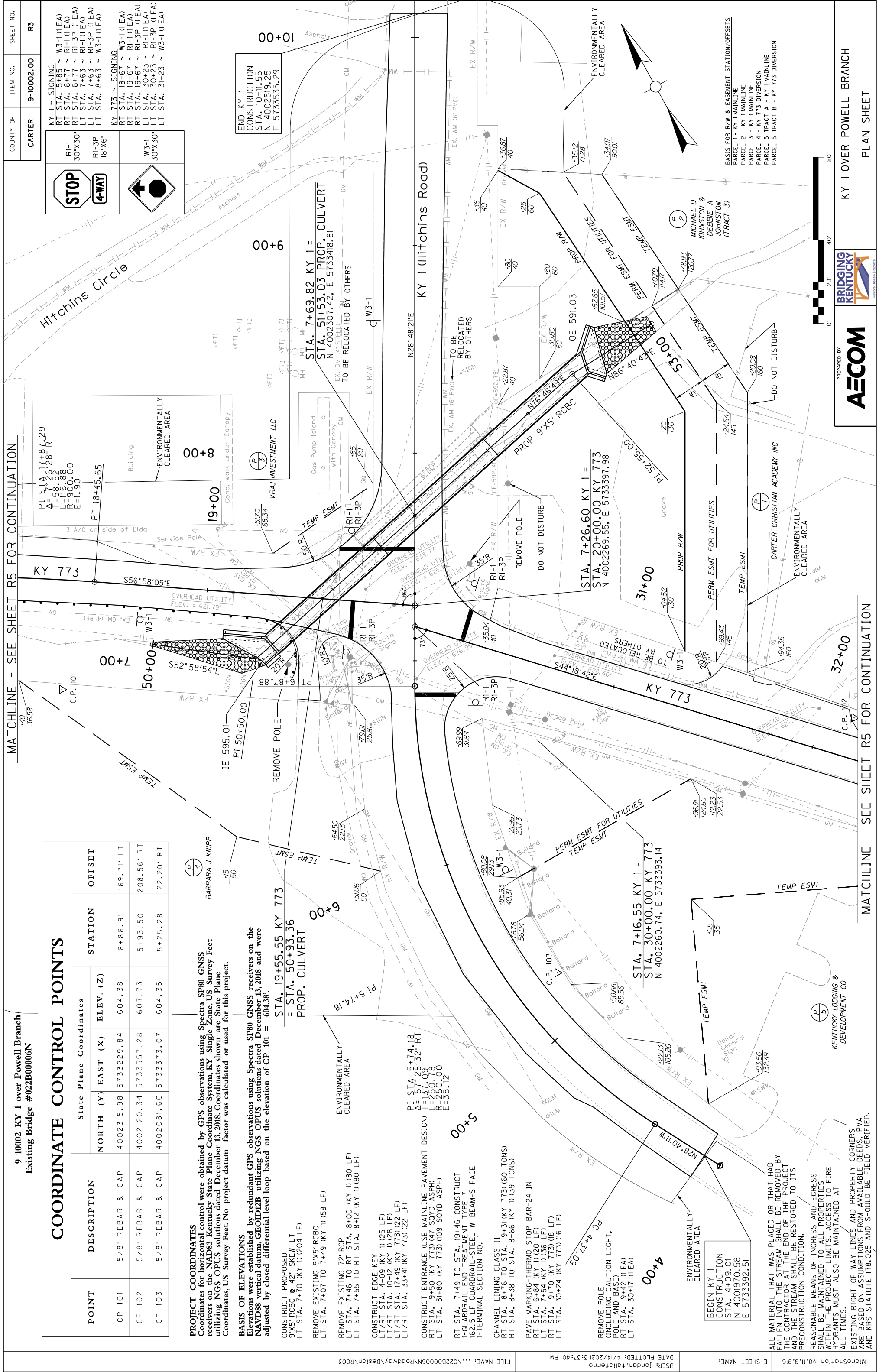
**KY 1 - SIGNING**  
RT STA. 5+85 ~ W3-1 (1 EA)  
RT STA. 6+77 ~ RI-1 (1 EA)  
RT STA. 6+77 ~ RI-3P (1 EA)  
LT STA. 7+63 ~ RI-1 (1 EA)  
LT STA. 7+63 ~ RI-3P (1 EA)  
LT STA. 8+63 ~ W3-1 (1 EA)  
**KY 773 - SIGNING**  
RT STA. 18+67 ~ W3-1 (1 EA)  
RT STA. 19+67 ~ RI-1 (1 EA)  
RT STA. 19+67 ~ RI-3P (1 EA)  
LT STA. 30+23 ~ RI-1 (1 EA)  
LT STA. 30+23 ~ RI-3P (1 EA)  
LT STA. 31+23 ~ W3-1 (1 EA)

**END KY 1 CONSTRUCTION**  
STA. 10+11.55  
N 4002519.25  
E 5733535.29

**STA. 7+69.82 KY 1 = STA. 51+53.03 PROP. CULVERT**  
N 4002307.42, E 5733418.81  
TO BE RELOCATED BY OTHERS

**STA. 7+26.60 KY 1 = STA. 20+00.00 KY 773**  
N 4002269.55, E 5733397.98

**STA. 7+16.55 KY 1 = STA. 30+00.00 KY 773**  
N 4002260.74, E 5733393.14



### COORDINATE CONTROL POINTS

POINT	DESCRIPTION	State Plane Coordinates			STATION	OFFSET
		NORTH (Y)	EAST (X)	ELEV. (Z)		
CP 101	5/8" REBAR & CAP	4002315.98	5733229.84	604.38	6+86.91	169.71' LT
CP 102	5/8" REBAR & CAP	4002120.34	5733557.28	607.73	5+93.50	208.56' RT
CP 103	5/8" REBAR & CAP	4002081.66	5733373.07	604.35	5+25.28	22.20' RT

**PROJECT COORDINATES**  
Coordinates for horizontal control were obtained by GPS observations using Spectra SP80 GNSS receivers on the NAD83 Kentucky State Plane Coordinate System, KY Single Zone, US Survey Feet utilizing NGS OPUS solutions dated December 13, 2018. Coordinates shown are State Plane Coordinates, US Survey Feet. No project datum factor was calculated or used for this project.

**BASIS OF ELEVATIONS**  
Elevations were established by redundant GPS observations using Spectra SP80 GNSS receivers on the NAD83 vertical datum, GEOD12B utilizing NGS OPUS solutions dated December 13, 2018 and were adjusted by closed differential level loop based on the elevation of CP 101 = 604.38'.

**CONSTRUCT PROPOSED**  
9'X5' RCBC @ 42° SKEW LT  
LT STA. 7+70 TO 7+49 (KY 1) (58 LF)

**REMOVE EXISTING** 9'X5' RCBC  
LT STA. 7+07 TO 7+49 (KY 1) (58 LF)

**REMOVE EXISTING** 72" RCP  
LT STA. 7+46 TO RT STA. 8+00 (KY 1) (80 LF)  
LT STA. 7+55 TO RT STA. 8+12 (KY 1) (80 LF)

**CONSTRUCT EDGE KEY** W3-1  
LT/RT STA. 4+09 (KY 1) (25 LF)  
LT/RT STA. 10+12 (KY 1) (28 LF)  
LT/RT STA. 17+49 (KY 1) (22 LF)  
LT/RT STA. 33+41 (KY 1) (22 LF)

**CONSTRUCT ENTRANCE** (USE MAINLINE PAVEMENT DESIGN)  
RT STA. 19+50 (KY 1) (47 SOYD ASPH)  
LT STA. 31+80 (KY 1) (109 SOYD ASPH)

**RT STA. 17+49 TO STA. 19+46** CONSTRUCT  
I-GUARDRAIL END TREATMENT TYPE 7  
162.5 LF GUARDRAIL-STEEL W BEAM-S FACE  
I-TERMINAL SECTION NO. 1

**CHANNEL LINING** CLASS II  
RT STA. 18+76 TO STA. 19+31 (KY 1) (773) (60 TONS)  
RT STA. 8+38 TO STA. 8+66 (KY 1) (39 TONS)

**PAVE MARKING-THERMO STOP BAR-24 IN**  
RT STA. 6+84 (KY 1) (20 LF)  
LT STA. 7+54 (KY 1) (36 LF)  
RT STA. 19+70 (KY 1) (773) (18 LF)  
LT STA. 30+24 (KY 1) (16 LF)

**REMOVE POLE** (INCLUDING CAUTION LIGHT, POLE AND BASE)  
RT STA. 19+42 (1 EA)  
LT STA. 30+17 (1 EA)

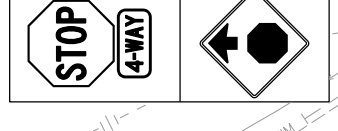
**BEGIN KY 1 CONSTRUCTION**  
STA. 4+09.01  
N 4001970.58  
E 5733392.51

**ENVIRONMENTALLY CLEARED AREA**

**ALL MATERIAL THAT WAS PLACED OR THAT HAD FALLEN INTO THE STREAM SHALL BE REMOVED BY THE CONTRACTOR AT THE END OF THE PROJECT AND THE STREAM SHALL BE RESTORED TO ITS PRECONSTRUCTION CONDITION.**

**REASONABLE MEANS OF INGRESS AND EGRESS SHALL BE MAINTAINED TO ALL PROPERTIES WITHIN THE PROJECT LIMITS. ACCESS TO FIRE HYDRANTS MUST ALSO BE MAINTAINED AT ALL TIMES.**

**EXISTING RIGHT OF WAY LINES AND PROPERTY CORNERS ARE BASED ON ASSUMPTIONS FROM AVAILABLE DEEDS. PVA AND KRS STATUTE 178.025 AND SHOULD BE FIELD VERIFIED.**



**END KY 1 CONSTRUCTION**  
STA. 10+11.55  
N 4002519.25  
E 5733535.29

**STA. 7+69.82 KY 1 =**  
**STA. 51+53.03 PROP. CULVERT**  
N 4002307.42, E 5733418.81  
TO BE RELOCATED BY OTHERS

**STA. 7+26.60 KY 1 =**  
**STA. 20+00.00 KY 773**  
N 4002269.55, E 5733397.98

**STA. 19+55.55 KY 773**  
**STA. 50+93.36**  
PROP. CULVERT

**STA. 7+16.55 KY 1 =**  
**STA. 30+00.00 KY 773**  
N 4002260.74, E 5733393.14

**PI STA. 5+74.18**  
Δ = 274.28' 32' RT  
I = 137.09'  
B = 230.00'  
E = 55.12'

**PI STA. 17+87.29**  
Δ = 156.28' RT  
I = 58.52'  
B = 116.88'  
E = 900.00'

**PI STA. 17+87.29**  
Δ = 156.28' RT  
I = 58.52'  
B = 116.88'  
E = 900.00'

**PI STA. 17+87.29**  
Δ = 156.28' RT  
I = 58.52'  
B = 116.88'  
E = 900.00'

**PI STA. 17+87.29**  
Δ = 156.28' RT  
I = 58.52'  
B = 116.88'  
E = 900.00'

**PI STA. 17+87.29**  
Δ = 156.28' RT  
I = 58.52'  
B = 116.88'  
E = 900.00'

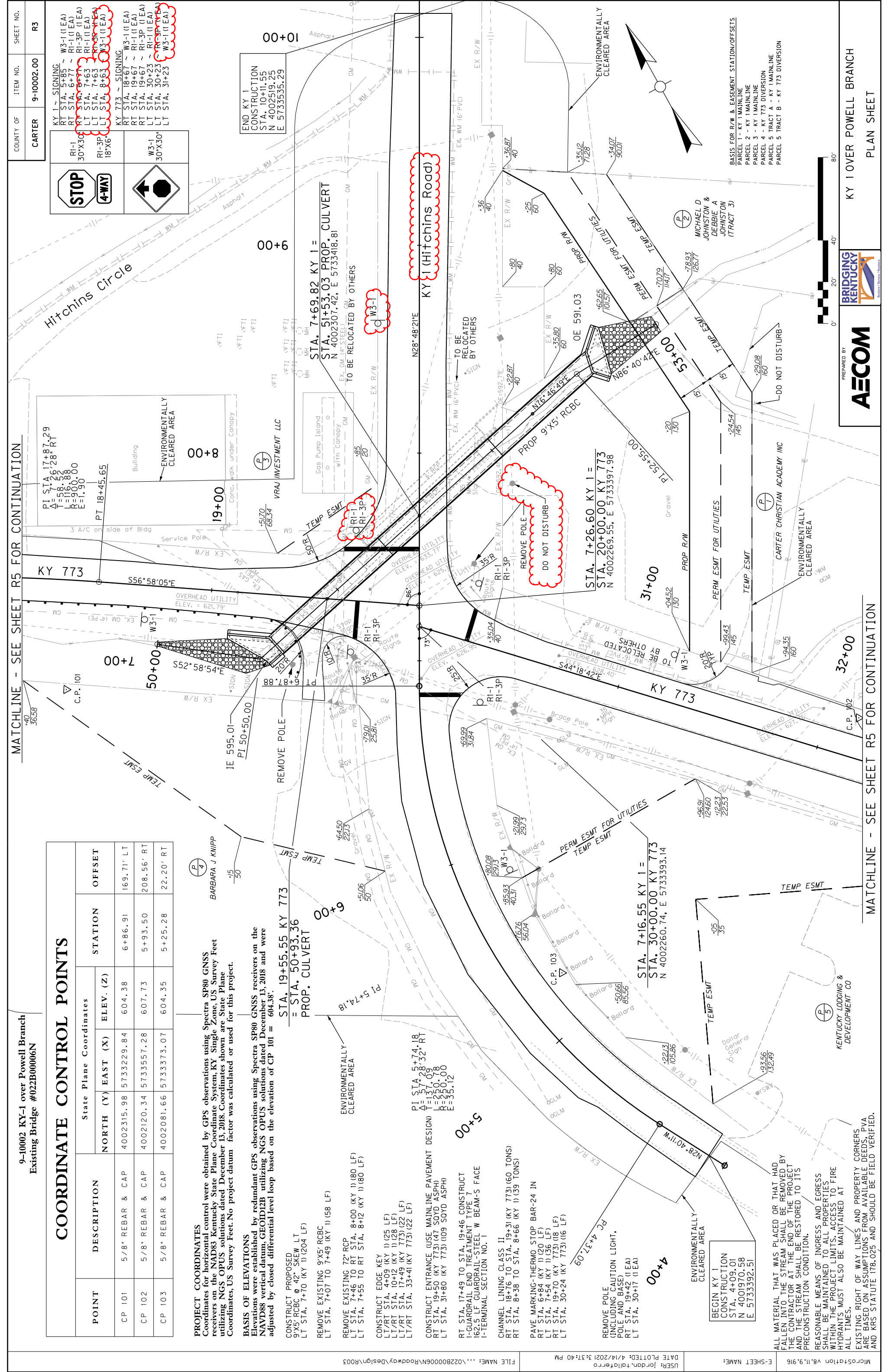
**PI STA. 17+87.29**  
Δ = 156.28' RT  
I = 58.52'  
B = 116.88'  
E = 900.00'

**PI STA. 17+87.29**  
Δ = 156.28' RT  
I = 58.52'  
B = 116.88'  
E = 900.00'

**PI STA. 17+87.29**  
Δ = 156.28' RT  
I = 58.52'  
B = 116.88'  
E = 900.00'

**PI STA. 17+87.29**  
Δ = 156.28' RT  
I = 58.52'  
B = 116.88'  
E = 900.00'

**PI STA. 17+87.29**  
Δ = 156.28' RT  
I = 58.52'  
B = 116.88'  
E = 900.00'



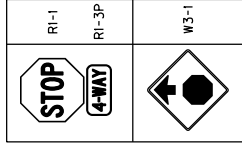


**GENERAL NOTES**

- TRAFFIC SHALL BE MAINTAINED IN ACCORDANCE WITH THE MANUAL ON UNIFORM TRAFFIC CONTROL DEVICES, THE STANDARD SPECIFICATIONS FOR ROAD AND BRIDGE CONSTRUCTION AND THE STANDARD DRAWINGS, CURRENT EDITIONS.
- EXCEPT FOR THE ROADWAY AND TRAFFIC CONTROL BID ITEMS LISTED, ALL ITEMS OF WORK NECESSARY TO MAINTAIN AND CONTROL TRAFFIC WILL BE PAID AT THE LUMP SUM BID PRICE TO "MAINTAIN AND CONTROL TRAFFIC" AS SET FORTH IN THE CURRENT STANDARD SPECIFICATIONS FOR ROAD AND BRIDGE CONSTRUCTION UNLESS OTHERWISE PROVIDED FOR IN THESE NOTES. THE LUMP SUM BID TO "MAINTAIN AND CONTROL TRAFFIC" SHALL ALSO INCLUDE, BUT IS NOT LIMITED TO, THE FOLLOWING ITEMS AND OPERATIONS:
  - ALL GRADING AND NECESSARY DRAINAGE (UNLESS A BID ITEM FOR DETOUR CONSTRUCTION IS INCLUDED) FOR THE TEMPORARY ROADWAY AND REMOVAL THEREOF, WHEN IT IS NO LONGER NEEDED. IF A BID ITEM FOR DETOUR CONSTRUCTION IS INCLUDED, GRADING AND DRAINAGE WILL BE PAID FOR IN THE BID ITEM "DIVERSIONS (BY-PASS DETOURS)".
  - ALL LABOR AND MATERIALS NECESSARY FOR CONSTRUCTION AND MAINTENANCE OF TRAFFIC CONTROL DEVICES AND MARKINGS, REMOVING AND RESETTling EXISTING PERMANENT TRAFFIC SIGNS.
  - ALL FLAG PERSONS AND TRAFFIC CONTROL DEVICES SUCH AS, BUT NOT LIMITED TO, SHORING, SHEET PILING, CONCRETE BARRIER WALL TYPE 9T (WITH DELINEATORS), CRASH CUSHION TYPE VI-BT, TEMPORARY TRAFFIC SIGNALS, FLASHERS, SIGNS, BARRICADES AND VERTICAL PANELS, PLASTIC DRUMS (STEEL DRUMS WILL NOT BE PERMITTED) AND CONES, INCLUDING ANY REQUIRED RELOCATION OF SAID ITEMS NECESSARY FOR THE CONTROL AND PROTECTION OF VEHICULAR AND PEDESTRIAN TRAFFIC AS SPECIFIED IN THESE NOTES, THE MUTCD OR THE ENGINEER.
  - ANY TEMPORARY TRAFFIC CONTROL ITEMS, DEVICES, MATERIALS AND INCIDENTALS SHALL REMAIN THE PROPERTY OF THE CONTRACTOR WHEN NO LONGER NEEDED.
  - THE CONTRACTOR SHALL MAINTAIN A MINIMUM LANE WIDTH OF 11 FEET.
  - THE CONTRACTOR SHALL COMPLETELY COVER ANY SIGNS, EITHER EXISTING, PERMANENT OR TEMPORARY, WHICH DO NOT PROPERLY APPLY TO THE CURRENT TRAFFIC PHASING, AND SHALL MAINTAIN THE COVERING UNTIL THE SIGNS ARE APPLICABLE OR ARE REMOVED.
  - IN GENERAL, ALL TRAFFIC CONTROL DEVICES SHALL BE PLACED STARTING AND PROCEEDING IN THE DIRECTION OF THE FLOW OF TRAFFIC AND REMOVED STARTING AND PROCEEDING IN THE DIRECTION OPPOSITE THE FLOW OF TRAFFIC.
  - THE ENGINEER AND THE CONTRACTOR, OR THEIR AUTHORIZED REPRESENTATIVES, SHALL REVIEW THE SIGNING BEFORE TRAFFIC IS ALLOWED TO USE ANY LANE CLOSURES, CROSSOVERS OR DETOURS. ALL SIGNING SHALL BE APPROVED BY THE ENGINEER BEFORE WORK CAN BE STARTED BY THE CONTRACTOR.
  - IF THE CONTRACTOR DESIRES TO DEVIATE FROM THE TRAFFIC CONTROL SCHEME AND CONSTRUCTION SCHEDULE OUTLINED IN THESE PLANS AND THIS PROPOSAL, HE SHALL PREPARE AN ALTERNATE PLAN AND PRESENT IT IN WRITING TO THE ENGINEER. THIS ALTERNATE PLAN CAN BE USED ONLY AFTER REVIEW AND APPROVAL OF THE DIVISIONS OF TRAFFIC, DESIGN AND CONSTRUCTION, AND THE FEDERAL HIGHWAY ADMINISTRATION, WHERE APPLICABLE.
  - IF TRAFFIC SHOULD BE STOPPED DUE TO CONSTRUCTION OPERATIONS AND AN EMERGENCY VEHICLE ON AN OFFICIAL EMERGENCY RUN ARRIVES AT THE SCENE, THE CONTRACTOR SHALL MAKE THE PROVISIONS FOR THE PASSAGE OF THAT VEHICLE AS QUICKLY AS POSSIBLE.
  - ALL SIGNS NECESSARY FOR A MARKED DETOUR WILL BE PROVIDED BY THE CONTRACTOR AS REQUIRED BY THE STANDARD DRAWINGS AND THE MUTCD. SIGNS OUTSIDE THE PROJECT LIMITS SHALL BE PAID FOR BY THE SQUARE FOOT. THIS QUANTITY SHALL INCLUDE SIGN MOUNTING HARDWARE AND POSTS.
    - \*SEE SPECIAL NOTE "NOT PHASING NOTES" FOR PHASING DATES AND CONTAMINATED SOIL COORDINATION.
- PHASE I CONSTRUCTION:
  - CONSTRUCT ALL TEMPORARY TRAFFIC DEVICES IN ACCORDANCE WITH THE CURRENT EDITION OF THE KYTC SPEC BOOK, STANDARD DRAWINGS AND MUTCD.
  - MAINTAIN TWO LANES OF TRAFFIC ON EXISTING KY 1 AND KY 773.
  - CONSTRUCT THE DOUBLE 60" PIPES AND PHASE I OF THE PROPOSED 9'x5' RBCB. CONSTRUCT THE TEMPORARY DIVERSION (TO BE USED BY TRAFFIC DURING PHASE II) UP TO THE LIMITS OF THE EXISTING ROADWAYS (KY 1 AND KY 773). MAINTAIN ALL EXISTING DRAINAGE PATTERNS.
- PHASE II CONSTRUCTION:
  - SWITCH TRAFFIC TO THE PHASE II TEMPORARY DIVERSION. THE TEMPORARY DIVERSION INTERSECTION SHALL BE A FOUR WAY STOP CONDITION WITH RUMBLE STRIPS ON ALL APPROACHES TO ALERT TRAFFIC OF THE NEW INTERSECTION CONFIGURATION. ALL ITEMS NEEDED TO MAINTAIN AND CONTROL TRAFFIC, SUCH AS BUT NOT LIMITED TO RUMBLE STRIPS, STOP SIGNS, STOP AHEAD SIGNS, STOP BARS, TEMPORARY STRIPING, TEMPORARY GUARDRAIL END TREATMENTS AND TEMPORARY CRASH CUSHIONS SHALL BE INCIDENTAL TO THE PAY ITEM MAINTAIN AND CONTROL TRAFFIC.
- PHASE III CONSTRUCTION:
  - INSTALL TSRS, TEMP BARRIER WALL, CRASH CUSHIONS, ETC. AND CONSTRUCT PHASE III OF THE PROPOSED 9'x5' RBCB.
- PHASE IV CONSTRUCTION:
  - SWITCH TRAFFIC TO FINAL ALIGNMENT.
  - REMOVE THE DIVERSION, TEMPORARY PIPES, BARRIERS AND TRAFFIC CONTROL DEVICES. RESTORE EXISTING PARKING LOTS AND ENTRANCES TO MAINTAIN SAME ACCESS AS BEFORE DIVERSION CONSTRUCTION, USING MAINLINE PAVEMENT DESIGN.
  - COMPLETE FINAL SURFACING, ENTRANCE CONSTRUCTION, PARKING LOT RECONSTRUCTION AND PERMANENT SIGNING AND STRIPING OPERATIONS.

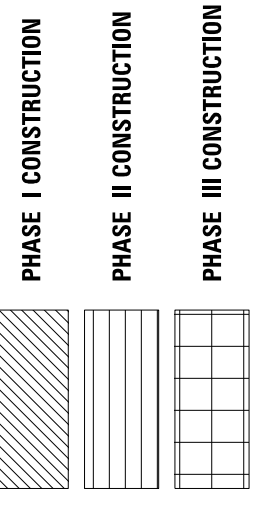
**PROPOSED CENTERLINE COORDINATE DATA KY 773 DIVERSION**

POINT	State Plane Coordinates NORTH (Y) EAST (X)	STATION
P OB	4002005.20 5733640.63	20+00.00
P C	4002015.93 5733630.16	20+15.00
P I	4002041.80 5733604.93	20+51.13
P T	4002057.21 5733572.24	20+86.50
P C	4002093.11 5733496.05	21+70.72
P I	4002104.22 5733472.48	21+96.77
P T	4002120.99 5733452.55	22+22.53
P C	4002225.82 5733327.95	23+85.37
P I	4002257.42 5733290.39	24+34.45
P R C	4002302.82 5733271.73	24+81.64
P I	4002367.40 5733245.18	25+51.46
P T	4002401.43 5733086.74	26+16.00
P O E	4002405.81 5733176.34	26+25.00



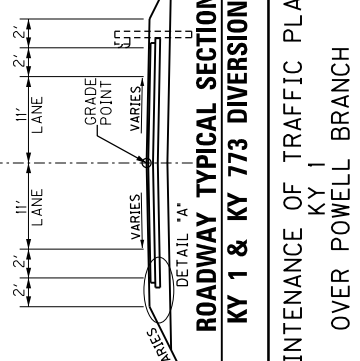
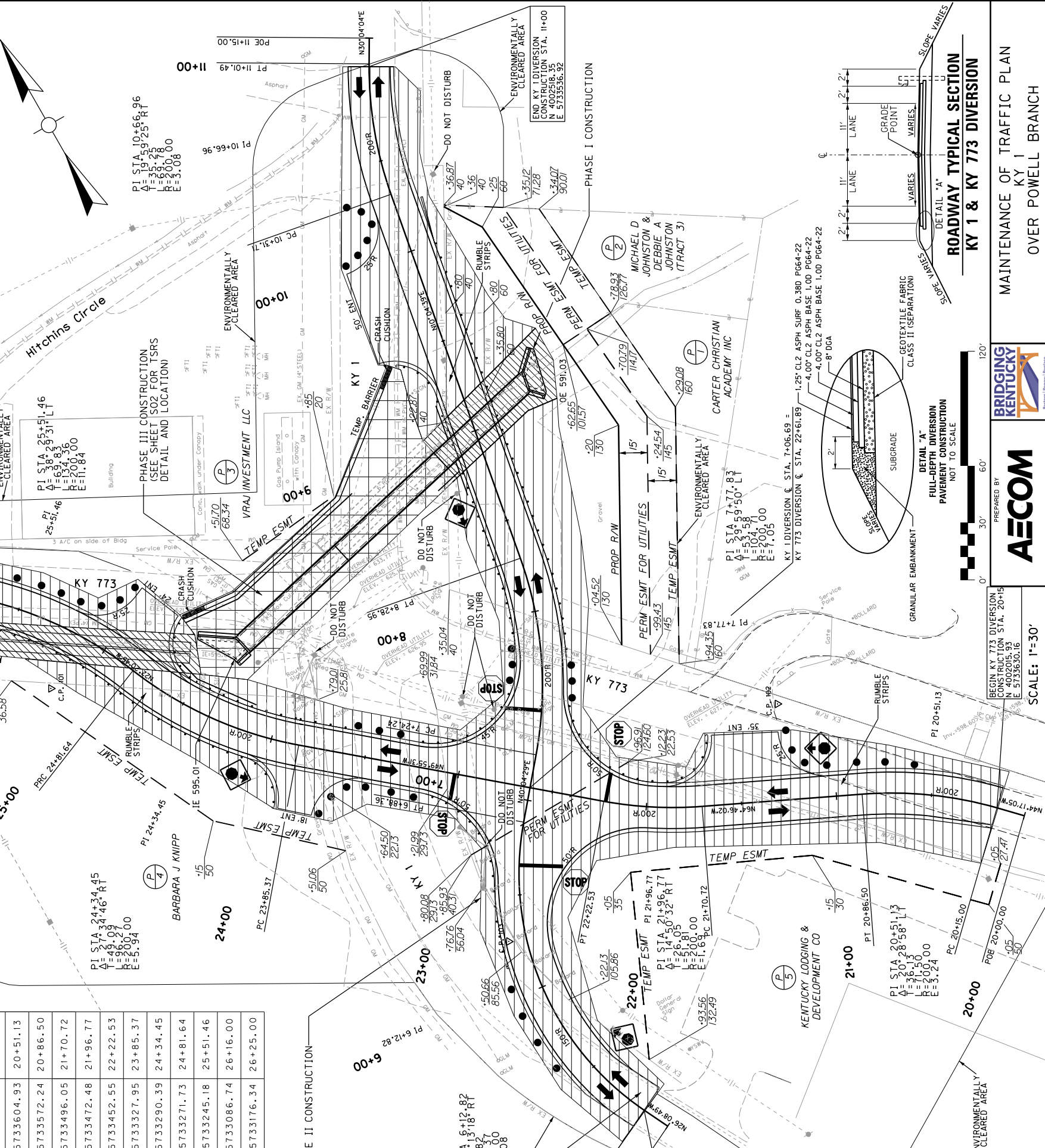
**PROPOSED CENTERLINE COORDINATE DATA KY 1 DIVERSION**

POINT	State Plane Coordinates NORTH (Y) EAST (X)	STATION
P OB	4001956.17 5733397.37	5+00.00
P C	4001969.63 5733390.76	5+14.99
P I	4002057.44 5733347.66	6+12.82
P T	4002132.29 5733410.63	6+88.36
P C	4002159.75 5733433.74	7+24.24
P I	4002200.76 5733468.23	7+77.83
P T	4002253.51 5733477.61	8+28.95
P C	4002453.14 5733513.09	10+31.71
P I	4002487.85 5733519.26	10+66.96
P T	4002518.35 5733536.92	11+01.49
P O E	4002530.04 5733543.69	11+15.00



COUNTY OF	ITEM NO.	SHEET NO.
CARTER	9-10002.00	R6

BASIS FOR R/W & EASEMENT STATION/OFFSETS  
 PARCEL 1 - KY 1 MAINLINE  
 PARCEL 2 - KY 1 MAINLINE  
 PARCEL 3 - KY 1 MAINLINE  
 PARCEL 4 - KY 773 DIVERSION  
 PARCEL 5 TRACT A - KY 1 MAINLINE  
 PARCEL 5 TRACT B - KY 773 DIVERSION



PREPARED BY  
 BEGIN KY 773 DIVERSION CONSTRUCTION STA. 20+15  
 N 4002015.93  
 E 5733630.16  
 SCALE: 1"=30'

MAINTENANCE OF TRAFFIC PLAN  
 KY 1  
 OVER POWELL BRANCH

END KY 773 DIVERSION CONSTRUCTION STA. 26+16  
 N 4002401.43  
 E 5733184.20

END KY 1 DIVERSION CONSTRUCTION STA. 11+00  
 N 4002518.35  
 E 5733536.92

END KY 773 DIVERSION CONSTRUCTION STA. 26+16  
 N 4002401.43  
 E 5733184.20

END KY 1 DIVERSION CONSTRUCTION STA. 11+00  
 N 4002518.35  
 E 5733536.92

END KY 773 DIVERSION CONSTRUCTION STA. 26+16  
 N 4002401.43  
 E 5733184.20

END KY 1 DIVERSION CONSTRUCTION STA. 11+00  
 N 4002518.35  
 E 5733536.92

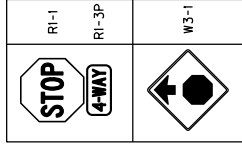
END KY 773 DIVERSION CONSTRUCTION STA. 26+16  
 N 4002401.43  
 E 5733184.20

**GENERAL NOTES**

- TRAFFIC SHALL BE MAINTAINED IN ACCORDANCE WITH THE MANUAL ON UNIFORM TRAFFIC CONTROL DEVICES, THE STANDARD SPECIFICATIONS FOR ROAD AND BRIDGE CONSTRUCTION AND THE STANDARD DRAWINGS, CURRENT EDITIONS.
- EXCEPT FOR THE ROADWAY AND TRAFFIC CONTROL BID ITEMS LISTED, ALL ITEMS OF WORK NECESSARY TO MAINTAIN AND CONTROL TRAFFIC WILL BE PAID AT THE LUMP SUM BID PRICE TO "MAINTAIN AND CONTROL TRAFFIC" AS SET FORTH IN THE CURRENT STANDARD SPECIFICATIONS FOR ROAD AND BRIDGE CONSTRUCTION UNLESS OTHERWISE PROVIDED FOR IN THESE NOTES. THE LUMP SUM BID TO "MAINTAIN AND CONTROL TRAFFIC" SHALL ALSO INCLUDE, BUT IS NOT LIMITED TO, THE FOLLOWING ITEMS AND OPERATIONS:
  - ALL GRADING AND NECESSARY DRAINAGE (UNLESS A BID ITEM FOR DETOUR CONSTRUCTION IS INCLUDED) FOR THE TEMPORARY ROADWAY AND REMOVAL THEREOF, WHEN IT IS NO LONGER NEEDED. IF A BID ITEM FOR DETOUR CONSTRUCTION IS INCLUDED, GRADING AND DRAINAGE WILL BE PAID FOR IN THE BID ITEM "DIVERSIONS (BY-PASS DETOURS)".
  - ALL LABOR AND MATERIALS NECESSARY FOR CONSTRUCTION AND MAINTENANCE OF TRAFFIC CONTROL DEVICES AND MARKINGS, REMOVING AND RESETTling EXISTING PERMANENT TRAFFIC SIGNS.
  - ALL FLAG PERSONS AND TRAFFIC CONTROL DEVICES SUCH AS, BUT NOT LIMITED TO, SHORING, SHEET PILING, CONCRETE BARRIER WALL TYPE 9T (WITH DELINEATORS), CRASH CUSHION TYPE VI-BT, TEMPORARY TRAFFIC SIGNALS, FLASHERS, SIGNS, BARRICADES AND VERTICAL PANELS, PLASTIC DRUMS (STEEL DRUMS WILL NOT BE PERMITTED) AND CONES, INCLUDING ANY REQUIRED RELOCATION OF SAID ITEMS NECESSARY FOR THE CONTROL AND PROTECTION OF VEHICULAR AND PEDESTRIAN TRAFFIC AS SPECIFIED IN THESE NOTES, THE MUTCD OR THE ENGINEER.
  - ANY TEMPORARY TRAFFIC CONTROL ITEMS, DEVICES, MATERIALS AND INCIDENTALS SHALL REMAIN THE PROPERTY OF THE CONTRACTOR WHEN NO LONGER NEEDED.
  - THE CONTRACTOR SHALL MAINTAIN A MINIMUM LANE WIDTH OF 11 FEET.
  - THE CONTRACTOR SHALL COMPLETELY COVER ANY SIGNS, EITHER EXISTING, PERMANENT OR TEMPORARY, WHICH DO NOT PROPERLY APPLY TO THE CURRENT TRAFFIC PHASING, AND SHALL MAINTAIN THE COVERING UNTIL THE SIGNS ARE APPLICABLE OR ARE REMOVED.
  - IN GENERAL, ALL TRAFFIC CONTROL DEVICES SHALL BE PLACED STARTING AND PROCEEDING IN THE DIRECTION OF THE FLOW OF TRAFFIC AND REMOVED STARTING AND PROCEEDING IN THE DIRECTION OPPOSITE THE FLOW OF TRAFFIC.
  - THE ENGINEER AND THE CONTRACTOR, OR THEIR AUTHORIZED REPRESENTATIVES, SHALL REVIEW THE SIGNING BEFORE TRAFFIC IS ALLOWED TO USE ANY LANE CLOSURES, CROSSOVERS OR DETOURS. ALL SIGNING SHALL BE APPROVED BY THE ENGINEER BEFORE WORK CAN BE STARTED BY THE CONTRACTOR.
  - IF THE CONTRACTOR DESIRES TO DEVIATE FROM THE TRAFFIC CONTROL SCHEME AND CONSTRUCTION SCHEDULE OUTLINED IN THESE PLANS AND THIS PROPOSAL, HE SHALL PREPARE AN ALTERNATE PLAN AND PRESENT IT IN WRITING TO THE ENGINEER. THIS ALTERNATE PLAN CAN BE USED ONLY AFTER REVIEW AND APPROVAL OF THE DIVISIONS OF TRAFFIC, DESIGN AND CONSTRUCTION, AND THE FEDERAL HIGHWAY ADMINISTRATION, WHERE APPLICABLE.
  - IF TRAFFIC SHOULD BE STOPPED DUE TO CONSTRUCTION OPERATIONS AND AN EMERGENCY VEHICLE ON AN OFFICIAL EMERGENCY RUN ARRIVES AT THE SCENE, THE CONTRACTOR SHALL MAKE THE PROVISIONS FOR THE PASSAGE OF THAT VEHICLE AS QUICKLY AS POSSIBLE.
  - ALL SIGNS NECESSARY FOR A MARKED DETOUR WILL BE PROVIDED BY THE CONTRACTOR AS REQUIRED BY THE STANDARD DRAWINGS AND THE MUTCD. SIGNS OUTSIDE THE PROJECT LIMITS SHALL BE PAID FOR BY THE SQUARE FOOT. THIS QUANTITY SHALL INCLUDE SIGN MOUNTING HARDWARE AND POSTS.
    - \*SEE SPECIAL NOTE "NOT PHASING NOTES" FOR PHASING DATES AND CONTAMINATED SOIL COORDINATION.
- PHASE I CONSTRUCTION:
  - CONSTRUCT ALL TEMPORARY TRAFFIC DEVICES IN ACCORDANCE WITH THE CURRENT EDITION OF THE KYTC SPEC BOOK, STANDARD DRAWINGS AND MUTCD.
  - MAINTAIN TWO LANES OF TRAFFIC ON EXISTING KY 1 AND KY 773.
  - CONSTRUCT THE DOUBLE 60" PIPES AND PHASE I OF THE PROPOSED 9'x5' RBCB. CONSTRUCT THE TEMPORARY DIVERSION (TO BE USED BY TRAFFIC DURING PHASE II) UP TO THE LIMITS OF THE EXISTING ROADWAYS (KY 1 AND KY 773). MAINTAIN ALL EXISTING DRAINAGE PATTERNS.
- PHASE II CONSTRUCTION:
  - SWITCH TRAFFIC TO THE PHASE II TEMPORARY DIVERSION. THE TEMPORARY DIVERSION INTERSECTION SHALL BE A FOUR WAY STOP CONDITION WITH RUMBLE STRIPS ON ALL APPROACHES TO ALERT TRAFFIC OF THE NEW INTERSECTION CONFIGURATION. ALL ITEMS NEEDED TO MAINTAIN AND CONTROL TRAFFIC, SUCH AS BUT NOT LIMITED TO RUMBLE STRIPS, STOP SIGNS, STOP AHEAD SIGNS, STOP BARS, TEMPORARY STRIPING, TEMPORARY GUARDRAIL END TREATMENTS AND TEMPORARY CRASH CUSHIONS SHALL BE INCIDENTAL TO THE PAY ITEM MAINTAIN AND CONTROL TRAFFIC.
- PHASE III CONSTRUCTION:
  - INSTALL TSRS, TEMP BARRIER WALL, CRASH CUSHIONS, ETC. AND CONSTRUCT PHASE III OF THE PROPOSED 9'x5' RBCB.
- PHASE IV CONSTRUCTION:
  - SWITCH TRAFFIC TO FINAL ALIGNMENT.
  - REMOVE THE DIVERSION, TEMPORARY PIPES, BARRIERS AND TRAFFIC CONTROL DEVICES. RESTORE EXISTING PARKING LOTS AND ENTRANCES TO MAINTAIN SAME ACCESS AS BEFORE DIVERSION CONSTRUCTION, USING MAINLINE PAVEMENT DESIGN.
  - COMPLETE FINAL SURFACING, ENTRANCE CONSTRUCTION, PARKING LOT RECONSTRUCTION AND PERMANENT SIGNING AND STRIPING OPERATIONS.

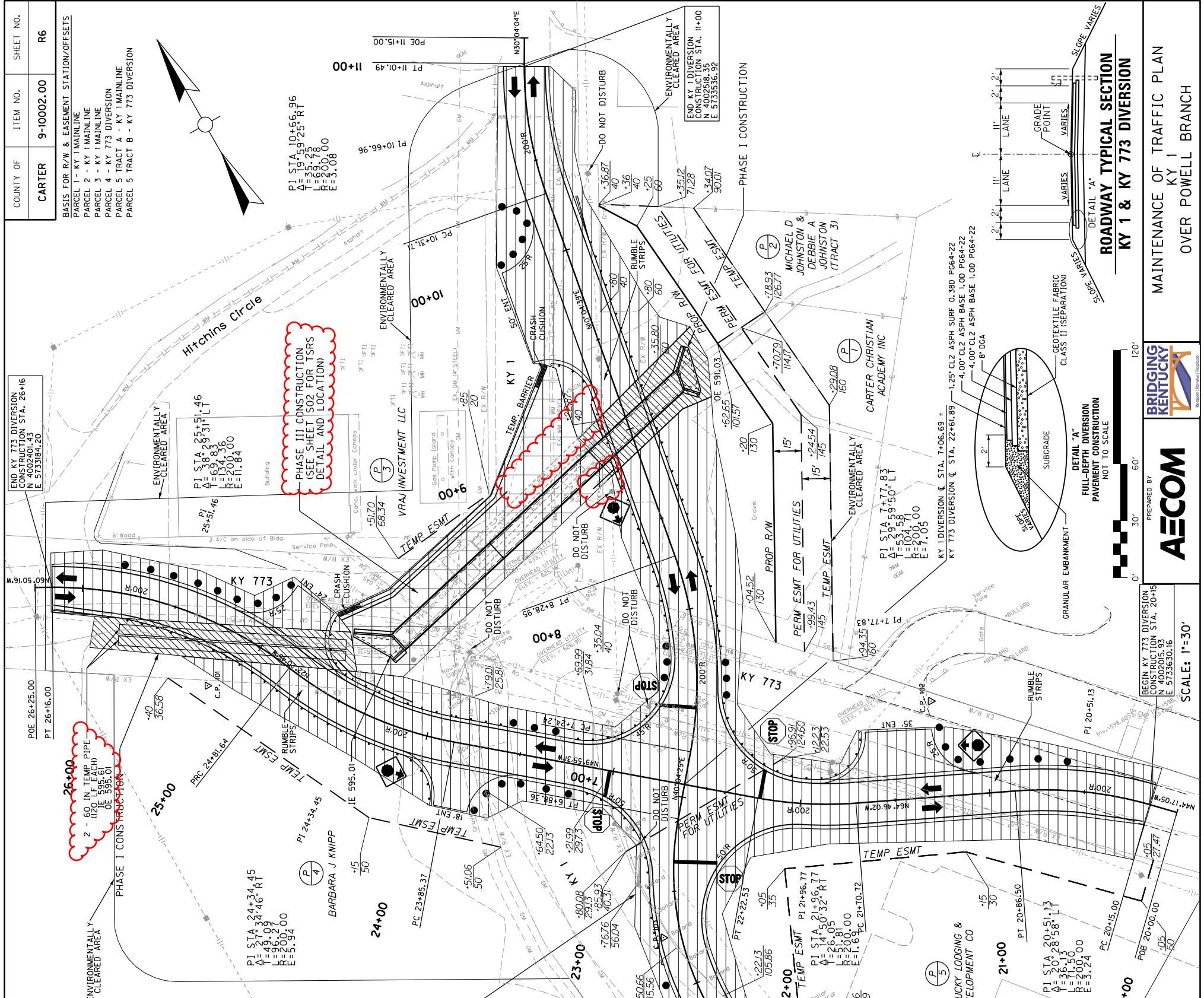
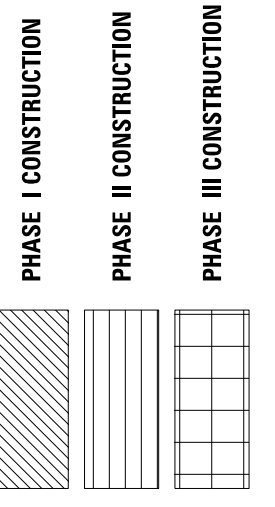
**PROPOSED CENTERLINE COORDINATE DATA KY 773 DIVERSION**

POINT	State Plane Coordinates NORTH (Y) EAST (X)	STATION
POB	4002005.20 5733640.63	20+00.00
PC	4002015.93 5733630.16	20+15.00
PI	4002041.80 5733604.93	20+51.13
PT	4002057.21 5733572.24	20+86.50
PC	4002093.11 5733496.05	21+70.72
PI	4002104.22 5733472.48	21+96.77
PT	4002120.99 5733452.55	22+22.53
PC	4002225.82 5733327.95	23+85.37
PI	4002257.42 5733290.39	24+34.45
PRC	4002302.82 5733271.73	24+81.64
PI	4002367.40 5733245.18	25+51.46
PT	4002401.43 5733086.74	26+16.00
POE	4002405.81 5733176.34	26+25.00



**PROPOSED CENTERLINE COORDINATE DATA KY 1 DIVERSION**

POINT	State Plane Coordinates NORTH (Y) EAST (X)	STATION
POB	4001956.17 5733397.37	5+00.00
PC	4001969.63 5733390.76	5+14.99
PI	4002057.44 5733347.66	6+12.82
PT	4002132.29 5733410.63	6+88.36
PC	4002159.75 5733433.74	7+24.24
PI	4002200.76 5733468.23	7+77.83
PT	4002253.51 5733477.61	8+28.95
PC	4002453.14 5733513.09	10+31.71
PI	4002487.85 5733519.26	10+66.96
PT	4002518.35 5733536.92	11+01.49
POE	4002530.04 5733543.69	11+15.00



COUNTY OF	ITEM NO.	SHEET NO.
CARTER	9-10002.00	R6

BASIS FOR R/W & EASEMENT STATION/OFFSETS  
 PARCEL 1 - KY 1 MAINLINE  
 PARCEL 2 - KY 1 MAINLINE  
 PARCEL 3 - KY 1 MAINLINE  
 PARCEL 4 - KY 773 DIVERSION  
 PARCEL 5 TRACT A - KY 1 MAINLINE  
 PARCEL 5 TRACT B - KY 773 DIVERSION

PHASE III CONSTRUCTION  
 (SEE SHEET S02 FOR TSRS  
 DETAIL AND LOCATION)

MAINTENANCE OF TRAFFIC PLAN  
 KY 1  
 OVER POWELL BRANCH

BRIDGING KENTUCKY

**AECOM**

PREPARED BY  
 BEGIN KY 773 DIVERSION  
 CONSTRUCTION STA. 20+15  
 N 4002015.93  
 E 5733630.16

SCALE: 1"=30'

PHASE I CONSTRUCTION

PHASE II CONSTRUCTION

PHASE III CONSTRUCTION

ROADWAY TYPICAL SECTION  
 KY 1 & KY 773 DIVERSION

DETAIL "A"  
 FULL-DEPTH DIVERSION  
 PAVEMENT CONSTRUCTION  
 NOT TO SCALE

120'  
 60'  
 30'

PREPARED BY  
 BEGIN KY 773 DIVERSION  
 CONSTRUCTION STA. 20+15  
 N 4002015.93  
 E 5733630.16

SCALE: 1"=30'

DATUM

BEGIN KY 773 DIVERSION  
CONSTRUCTION ~ STA. 20+15

PVI 20+15.00  
Elev 608.71

PVI 21+18.00  
Elev 608.20

PVI 22+61.89  
Elev 605.20

L = 100.00 FT  
G1 = 5.17%  
G2 = 2.00%  
E = 0.90 FT  
K = 13.94  
SSD = 103.03 FT

PVI 23+40.00  
Elev 606.11

L = 40.00 FT  
G1 = -2.00%  
G2 = 3.50%  
E = 0.27 FT  
K = 7.27  
SSD = 82.67 FT

PVI 23+75.00  
Elev 605.86

L = 75.00 FT  
G1 = -2.55%  
G2 = -1.06%  
E = 0.14 FT  
K = 50.31  
SSD = 255.00 FT

PVI 25+44.00  
Elev 601.55

PVI 26+16.00  
Elev 600.78

PVC 20+93.00  
Elev 608.32

L = 50.00 FT  
G1 = -0.50%  
G2 = -5.17%  
E = -0.29 FT  
K = 10.70  
SSD = 256.03 FT

PVI 21+43.00  
Elev 606.91

PVC 22+75.00  
Elev 604.93

PVI 22+95.00  
Elev 604.53

PVC 23+55.00  
Elev 605.00

L = 40.00 FT  
G1 = -0.70%  
G2 = -2.55%  
E = 0.09 FT  
K = 21.58  
SSD = 602.29 FT

PVI 25+44.00  
Elev 601.55

PVC 25+06.50  
Elev 602.51

PVI 26+16.00  
Elev 600.78

PVC 21+50.00  
Elev 606.54

PVI 21+50.00  
Elev 606.54

PVC 22+50.00  
Elev 604.96

PVI 22+50.00  
Elev 604.96

PVI 23+15.00  
Elev 605.23

PVI 23+15.00  
Elev 605.23

PVI 23+15.00  
Elev 605.23

PVI 23+15.00  
Elev 605.23

PVI 23+15.00  
Elev 605.23

PVI 23+15.00  
Elev 605.23

PVC 21+50.00  
Elev 606.54

PVI 21+50.00  
Elev 606.54

PVC 22+50.00  
Elev 604.96

PVI 22+50.00  
Elev 604.96

PVI 23+15.00  
Elev 605.23

PVI 23+15.00  
Elev 605.23

PVI 23+15.00  
Elev 605.23

PVI 23+15.00  
Elev 605.23

PVI 23+15.00  
Elev 605.23

PVI 23+15.00  
Elev 605.23

PVC 21+50.00  
Elev 606.54

PVI 21+50.00  
Elev 606.54

PVC 22+50.00  
Elev 604.96

PVI 22+50.00  
Elev 604.96

PVI 23+15.00  
Elev 605.23

PVI 23+15.00  
Elev 605.23

PVI 23+15.00  
Elev 605.23

PVI 23+15.00  
Elev 605.23

PVI 23+15.00  
Elev 605.23

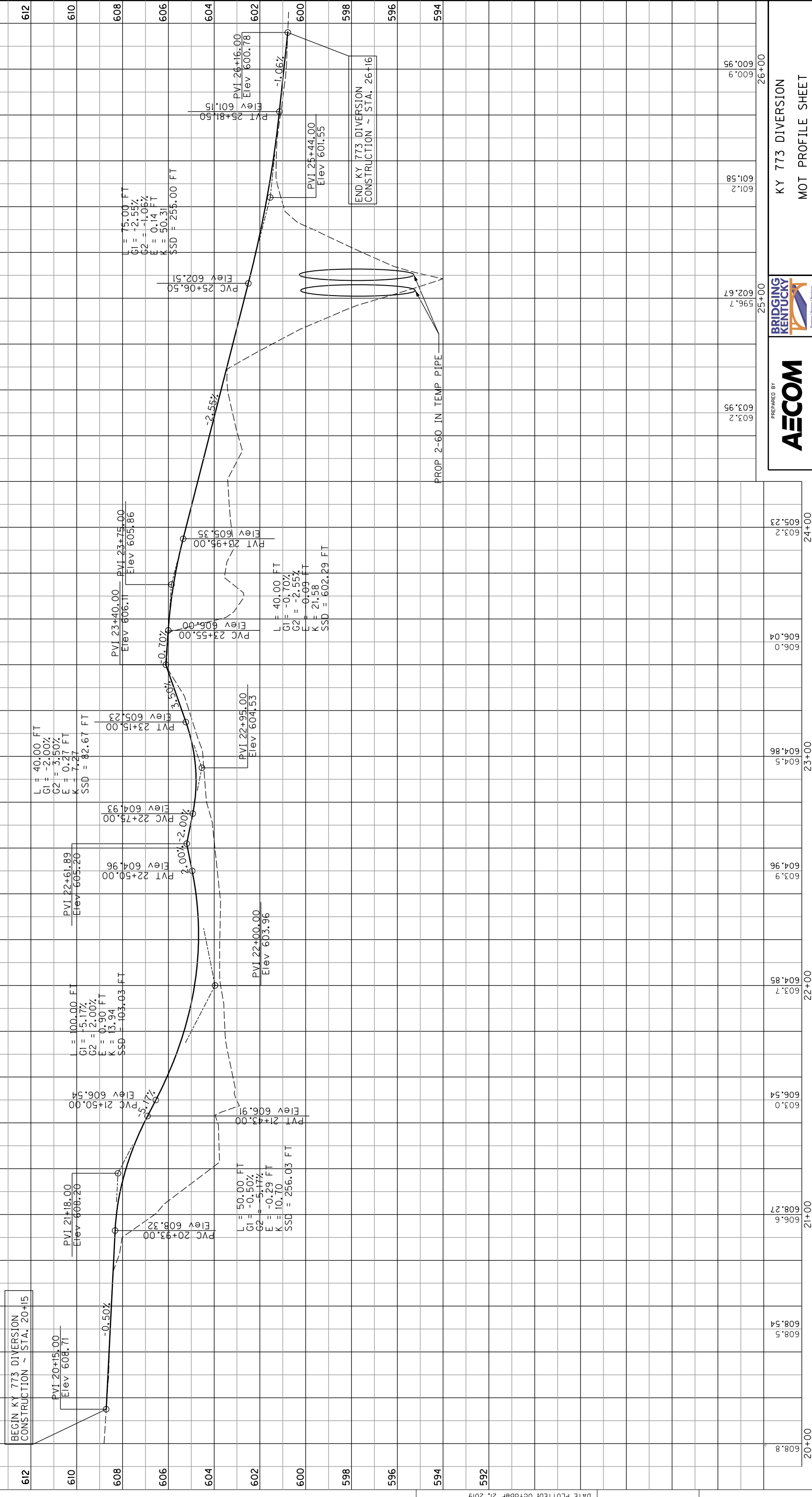
PVI 23+15.00  
Elev 605.23

FILE NAME: C:\PM.WORKING\00160070\R008.DGN

USER: Jordan.Tolterro  
DATE PLOTTED: October 21, 2019

E-SHEET NAME:

MicroStation V8.11.7.443



COUNTY OF  
**CARTER**

ITEM NO.  
**9-10002.00**

SHEET NO.  
**R8**

DATUM

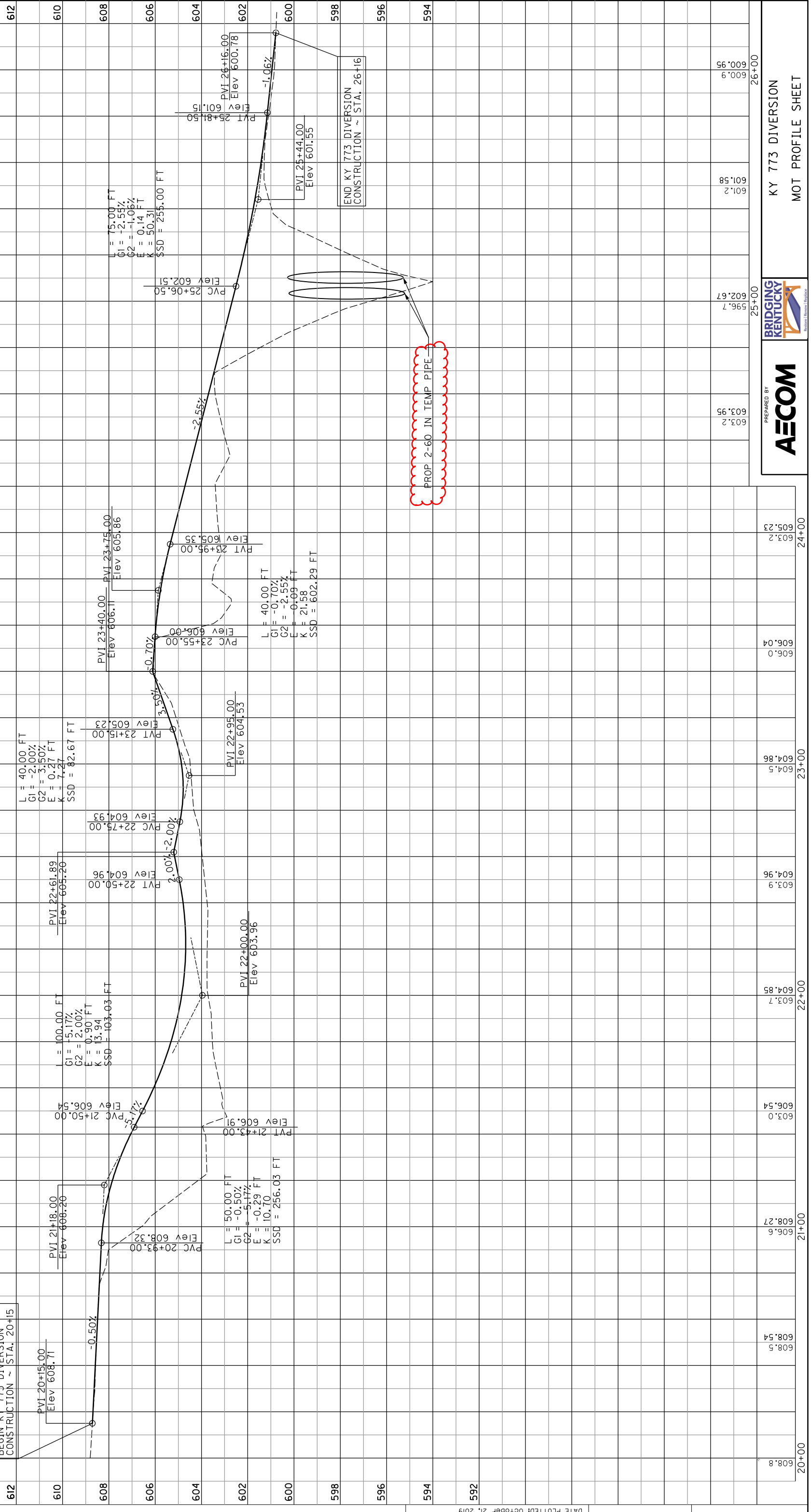
DATUM

COUNTY OF  
**CARTER**

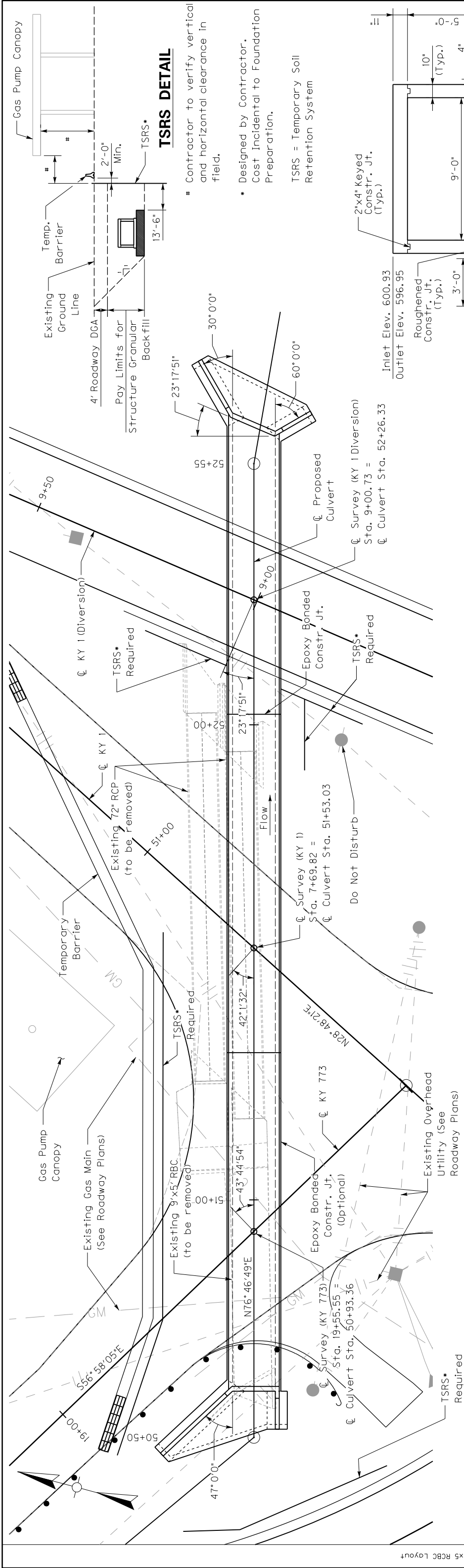
ITEM NO.  
**9-10002.00**

SHEET NO.  
**R8**

BEGIN KY 773 DIVERSION  
CONSTRUCTION ~ STA. 20+15



**AECOM**  
 PREPARED BY  
**BRIDGING KENTUCKY**  
 KY 773 DIVERSION  
 MOT PROFILE SHEET

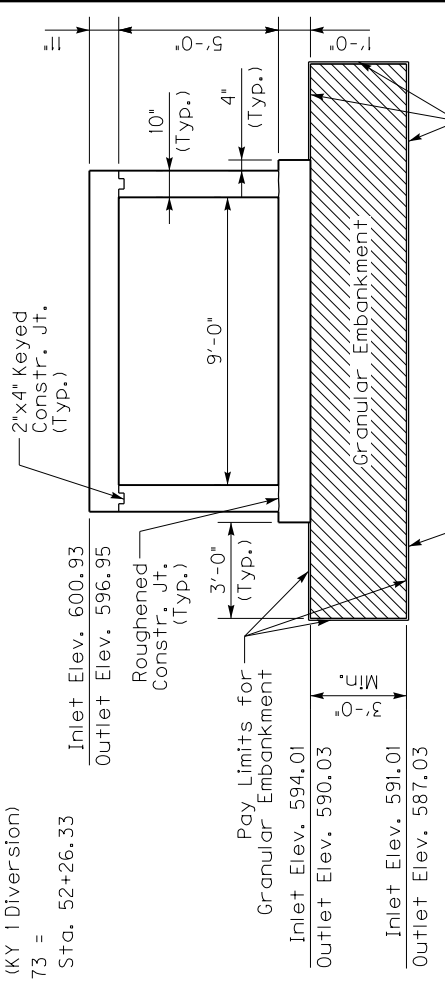


**PLAN**

9'x5'x204'-0" RCBC, 43°44'54" Skew Rt. (To KY 773), 23°17'51" Skew Lt. (To KY 1 Diversion)  
 Yielding Foundation, Variable Fill Slopes  
 Paved Inlet & Outlet, 10'-0" Max. Fill Height

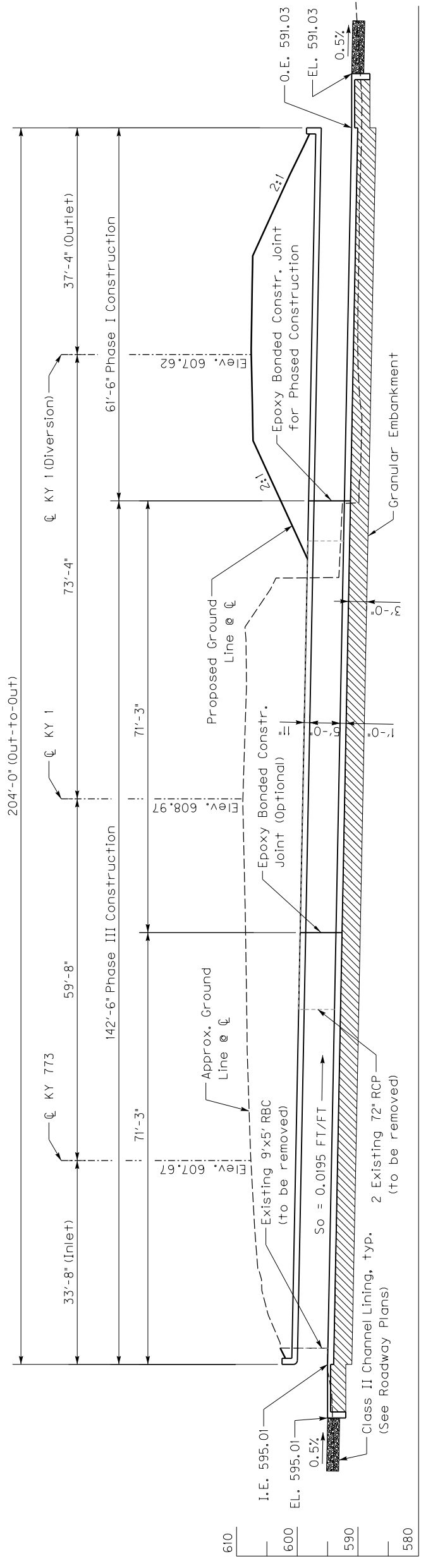
**TSRS DETAIL**

- Contractor to verify vertical and horizontal clearance in field.
- Designed by Contractor. Cost Incidental to Foundation Preparation.
- TSRS = Temporary Soil Retention System



**TYPICAL BARREL SECTION**

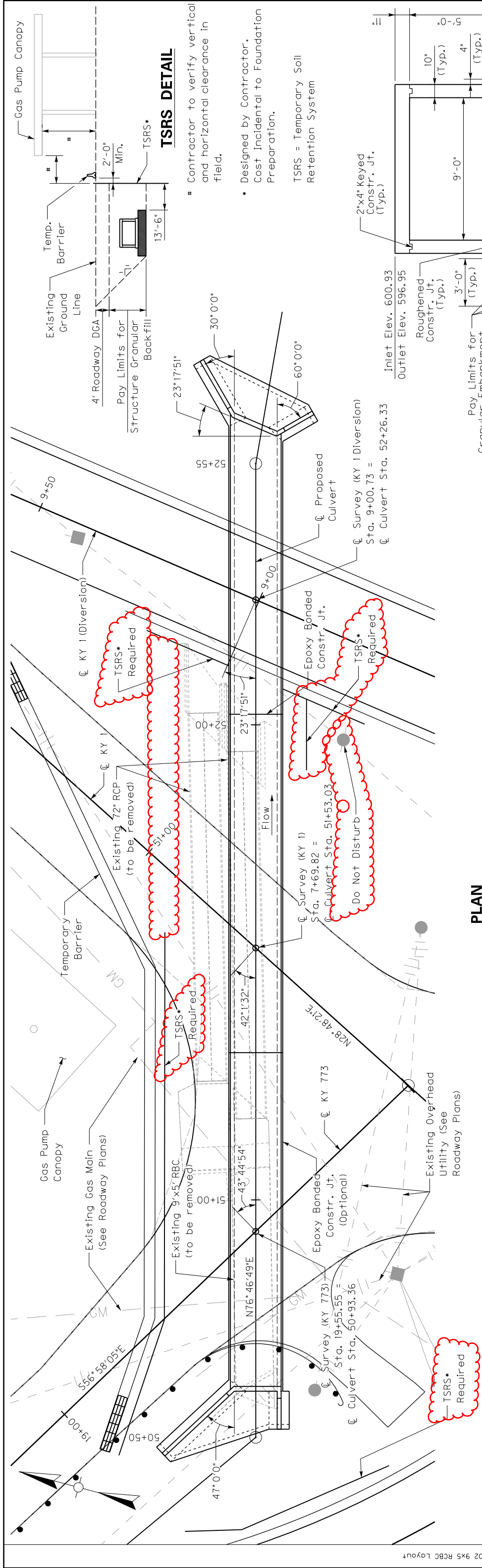
NOTE: Approx. qty. for Structure Granular Backfill = 1875 Cu. Yd. For information only. Not for bidding purposes.



**SECTION ALONG CULVERT**

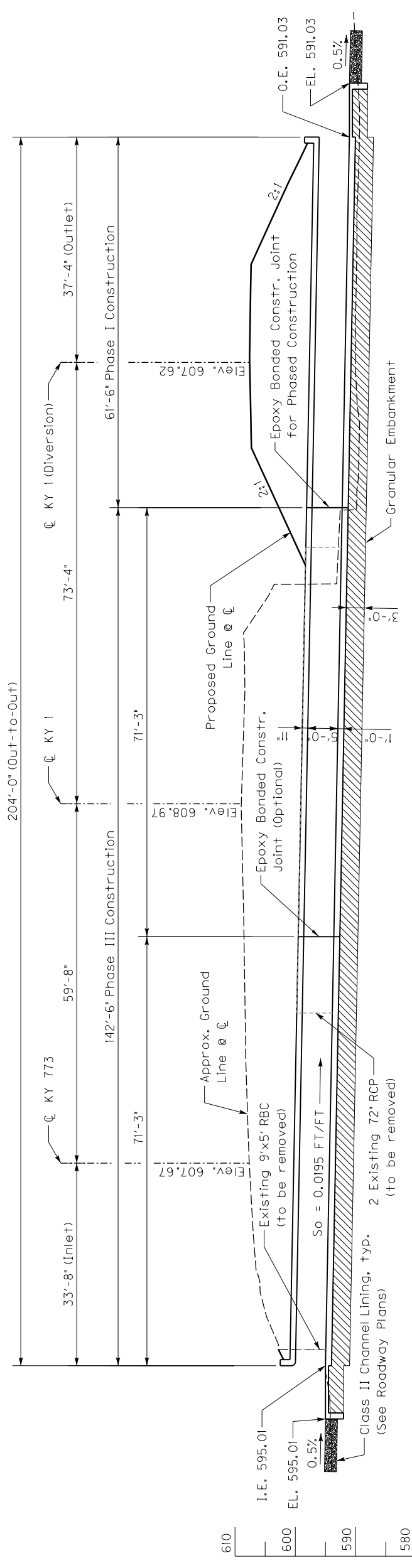
FLOOD DATA	
STORM RUNOFF (YR)	HEADWATER ELEV (ft)
100	606.59
381	606.59

REVISION	DATE
DESIGNED BY: A. MULLEN	CHECKED BY: S. DHATKAR
DETAILED BY: A. MULLEN	S. DHATKAR
<b>Commonwealth of Kentucky</b> <b>DEPARTMENT OF HIGHWAYS</b> COUNTY <b>CARTER</b>	
ROUTE <b>KY 1</b>	CROSSING <b>POWELL BRANCH</b>
<b>9x5 RCBC LAYOUT</b> PREPARED BY <b>AECOM</b>	
ITEM NUMBER <b>9-10002</b>	SHEET NO. <b>S02</b>
	DRAWING NO. <b>28151</b>



**PLAN**

9'x5'x204'-0" RCBC, 43°44'54" Skew Rt. (To KY 773), 23°17'51" Skew Lt. (To KY 1 Diversion)  
 Yielding Foundation, Variable Fill Slopes  
 Paved Inlet & Outlet, 10'-0" Max. Fill Height



FLOOD DATA	
STORM RUNOFF (YR)	HEADWATER ELEV (ft)
100	606.59
381	606.59

**SECTION ALONG CULVERT**

**TYPICAL BARREL SECTION**

NOTE: Approx. qty. for Structure Granular Backfill = 1875 Cu. Yd. For information only. Not for bidding purposes.

**TSRS DETAIL**

- Contractor to verify vertical and horizontal clearance in field.
- Designed by Contractor. Cost Incidental to Foundation Preparation.
- TSRS = Temporary Soil Retention System

REVISION	DATE
DESIGNED BY: A. MULLEN	CHECKED BY: S. DHATKAR
DETAILED BY: A. MULLEN	S. DHATKAR

Commonwealth of Kentucky  
 DEPARTMENT OF HIGHWAYS  
 COUNTY: CARTER  
 ROUTE: KY 1  
 CROSSING: POWELL BRANCH

9x5 RCBC LAYOUT  
 PREPARED BY: AECOM  
 SHEET NO. S02  
 DRAWING NO. 28151

ITEM NUMBER  
 9-10002